



LiveBuzz Onsite Badge Information

January 2026

1. **Logo Guidelines**
2. **Badge Guidelines**
3. **Badge Templates**
4. **Badge A - 100mm x 100mm (rectangle hole)**
5. **Badge B - 100mm x 100mm (circle hole)**
6. **Badge C - 105mm x 148mm (A6)**
7. **Badge D - 101.6mm x 101.6mm (non-adhesive)**
8. **Badge E - 105mm x 149.225mm (A6 non-adhesive)**
9. **Badge F - 96.5mm x 134mm (EPSON - UK)**
10. **Badge G - 4inch x 5inch (EPSON - USA)**
11. **Badge H - 4inch x 6inch (EPSON - USA)**

Logo Guidelines

Please provide all logos in one of the following formats:

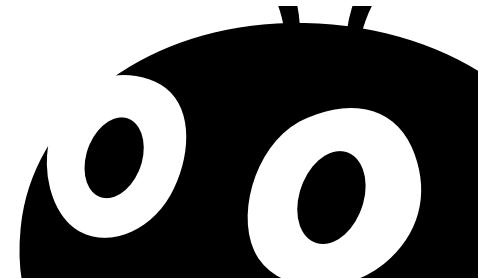
✓ **.ai, .eps, .svg, .pdf**

Logos should be supplied in **VECTOR** format.



Vector

Made up of points and curves. Scales without loss of resolution.



Raster

Made up of pixels - units of light that look like square dots on screen. Loss of quality when scaled.



Badge Guidelines

Yes!



✓ Left aligned with margin



✓ Right aligned with margin



✓ Centre aligned with margin

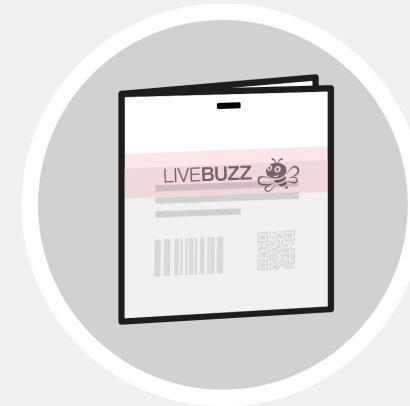
No!



✗ Covering badge slot



✗ Insufficient margin



✗ Covering badge details

Badge Templates

We recommend allowing as much space as possible for badging information following feedback from Exhibitors, who value being able to easily spot visitor names, and company details.

Our designers will include these as blank space in your proof.

See **Badge Guidelines**

Please forward any other details you would like to include on the badge template:

- ✓ **sponsor(s)**
- ✓ **logos**
- ✓ **social media references**
- ✓ **vector graphics / artwork**

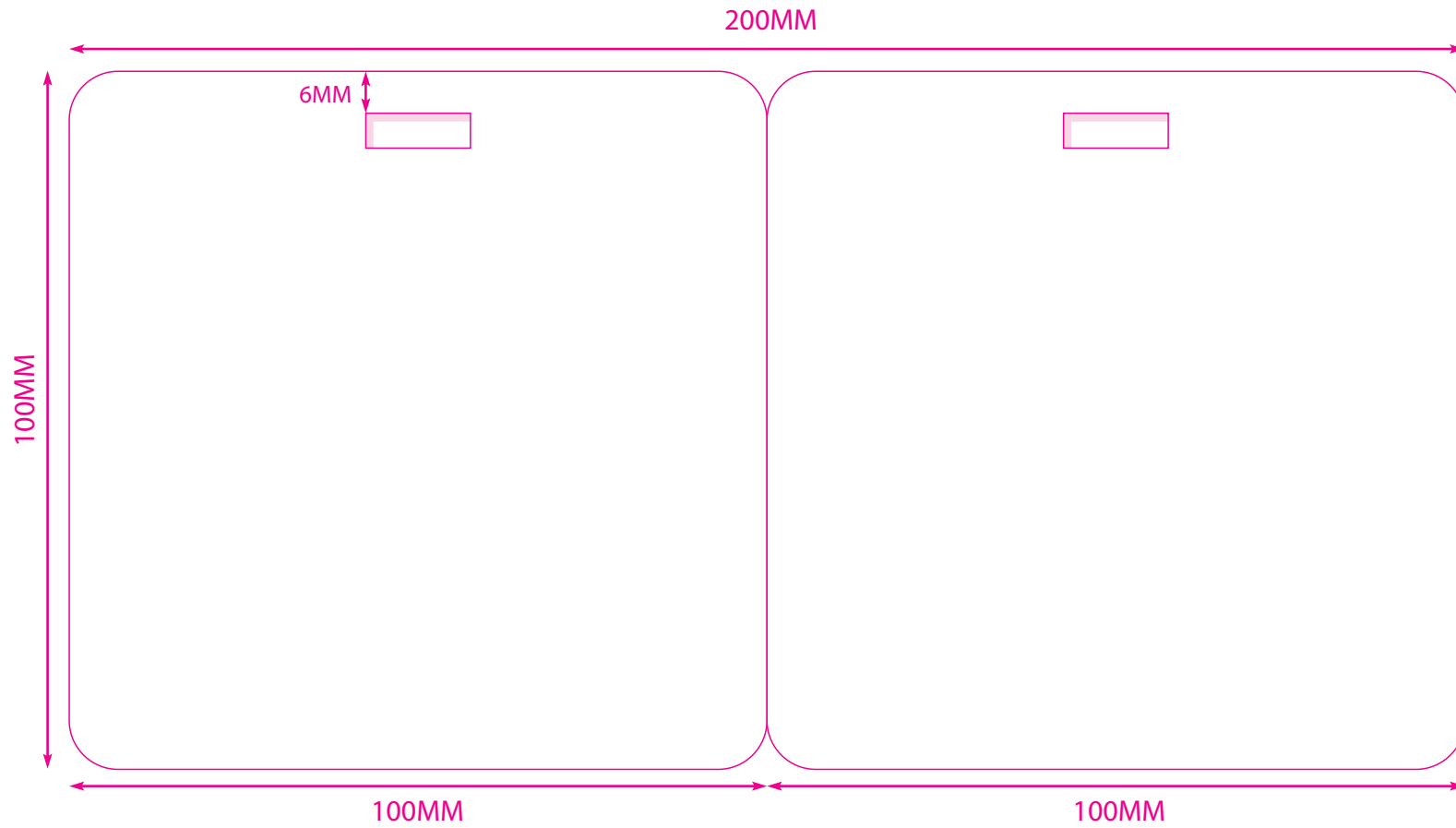
Please specify badge **type** and **size** from our range. You can find out more from your Event Registration Manager.

When considering the information you would like to include on the badge, please remember that we need to allow the following blank areas for badging information:

Badge Type	Badge Size	Blank Area
A (rectangle hole)	100mm x 100mm	100mm x 50mm
B (circle hole)	100mm x 100mm	100mm x 50mm
C (A6)	105mm x 148mm	100mm x 80mm
D (non-adhesive)	101.6mm x 101.6mm	100mm x 50mm
E (A6 non-adhesive)	105mm x 149.225mm	100mm x 80mm
F (EPSOM - UK)	96.5mm x 134mm	96.5mm x 80mm
G (EPSOM - USA)	4inch x 5inch	4inch x 3.5inch
H (EPSOM - USA)	4inch x 6inch	4inch x 4.5inch

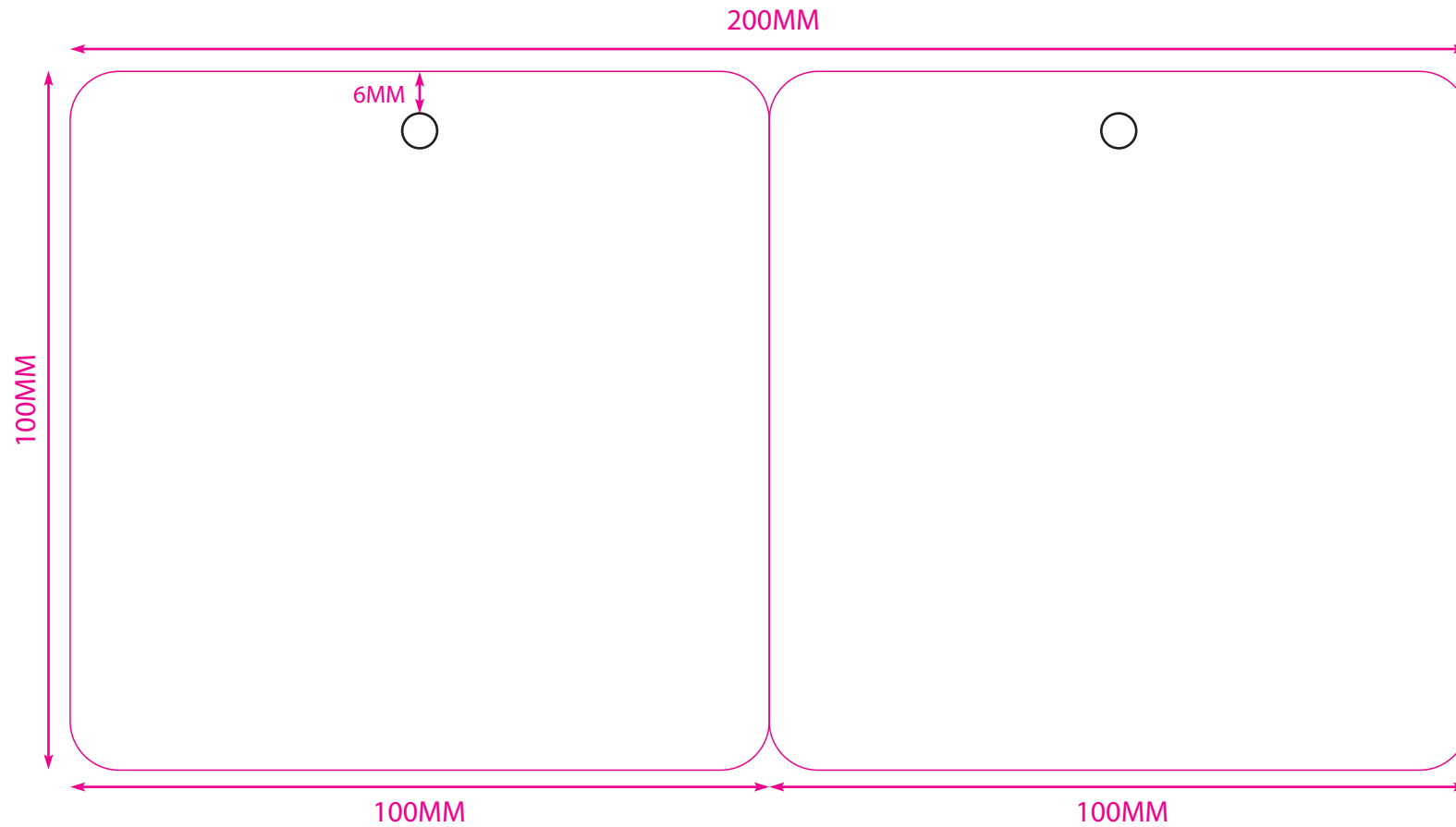
Badge A

100mm x 100mm (rectangle hole)



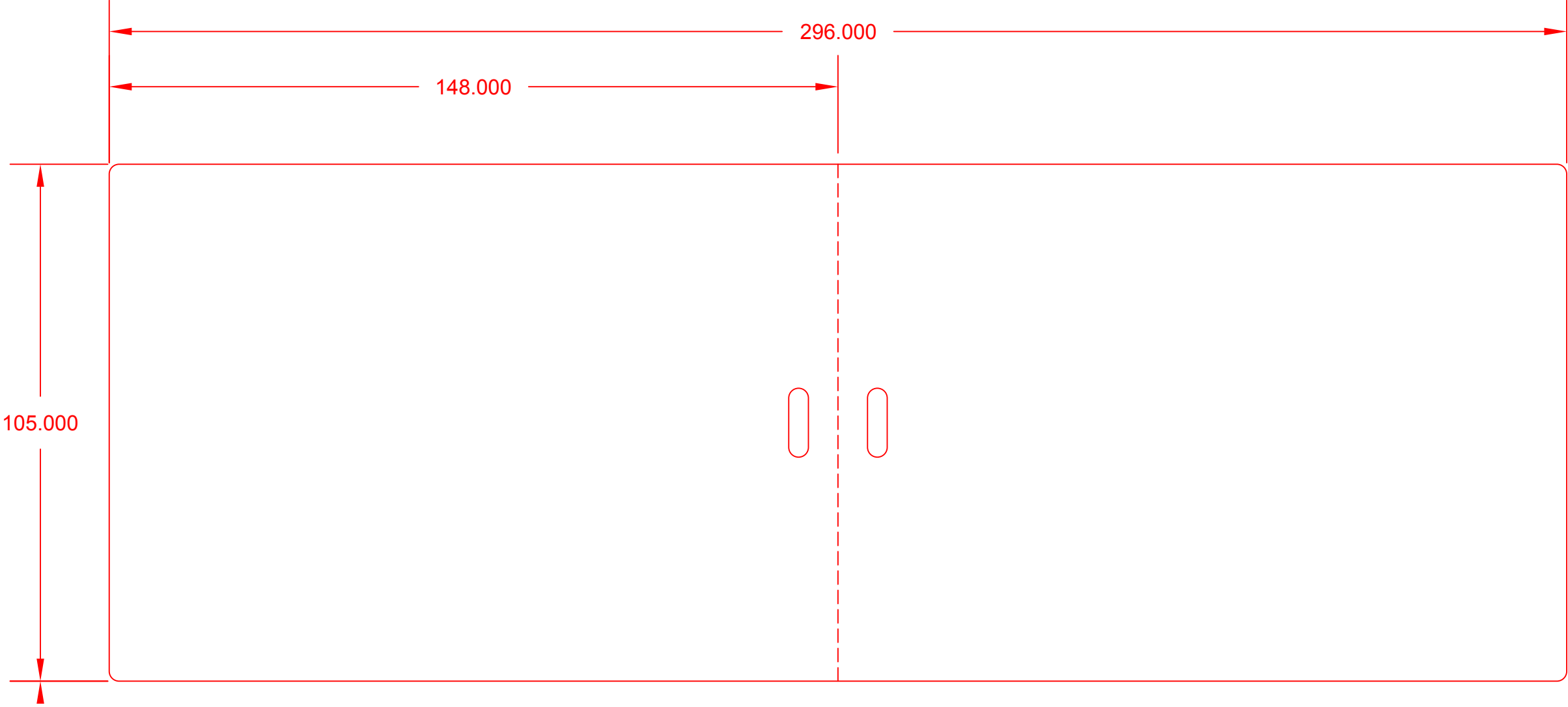
Badge B

100mm x 100mm (circle hole)



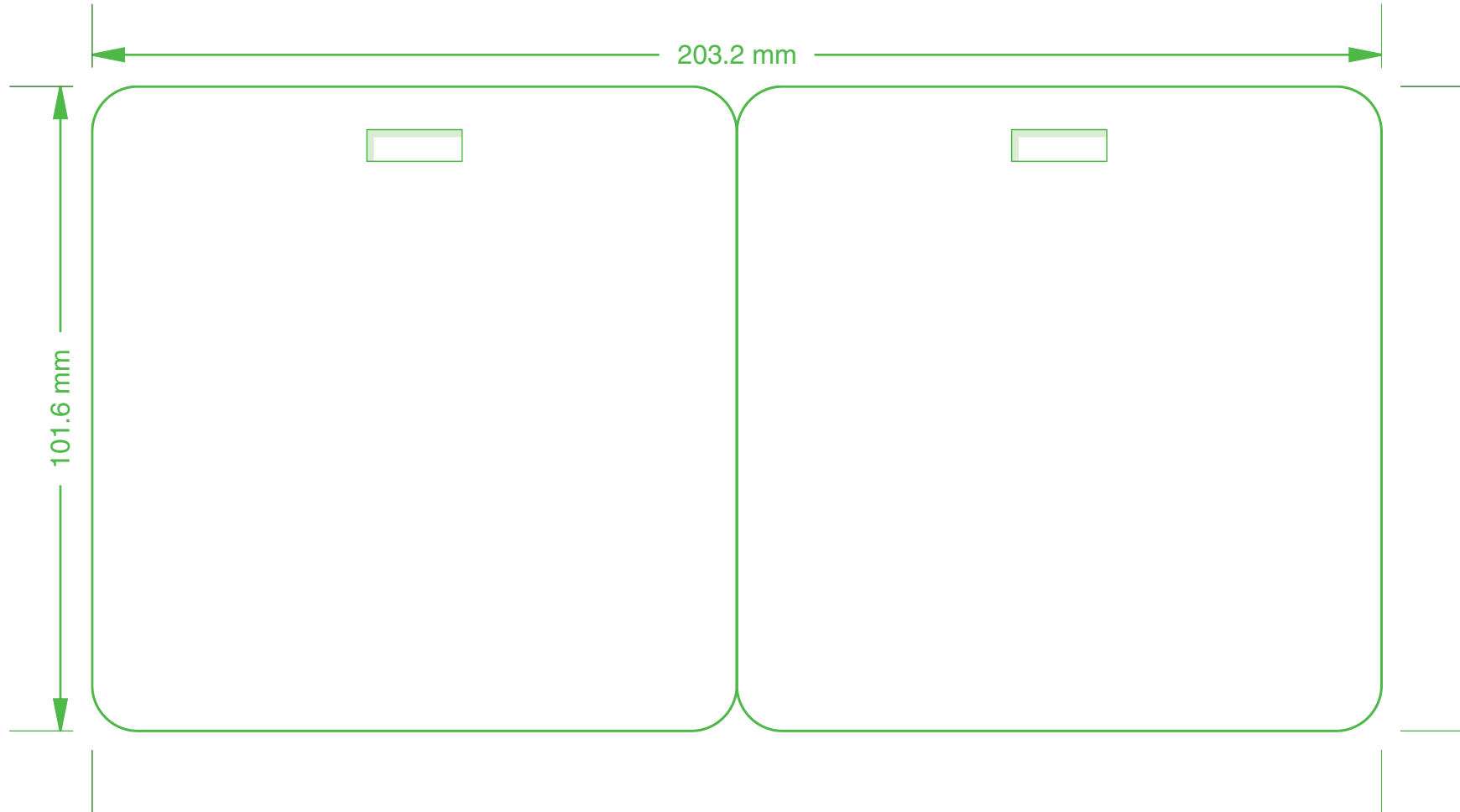
Badge C

105mm x 148mm (A6)



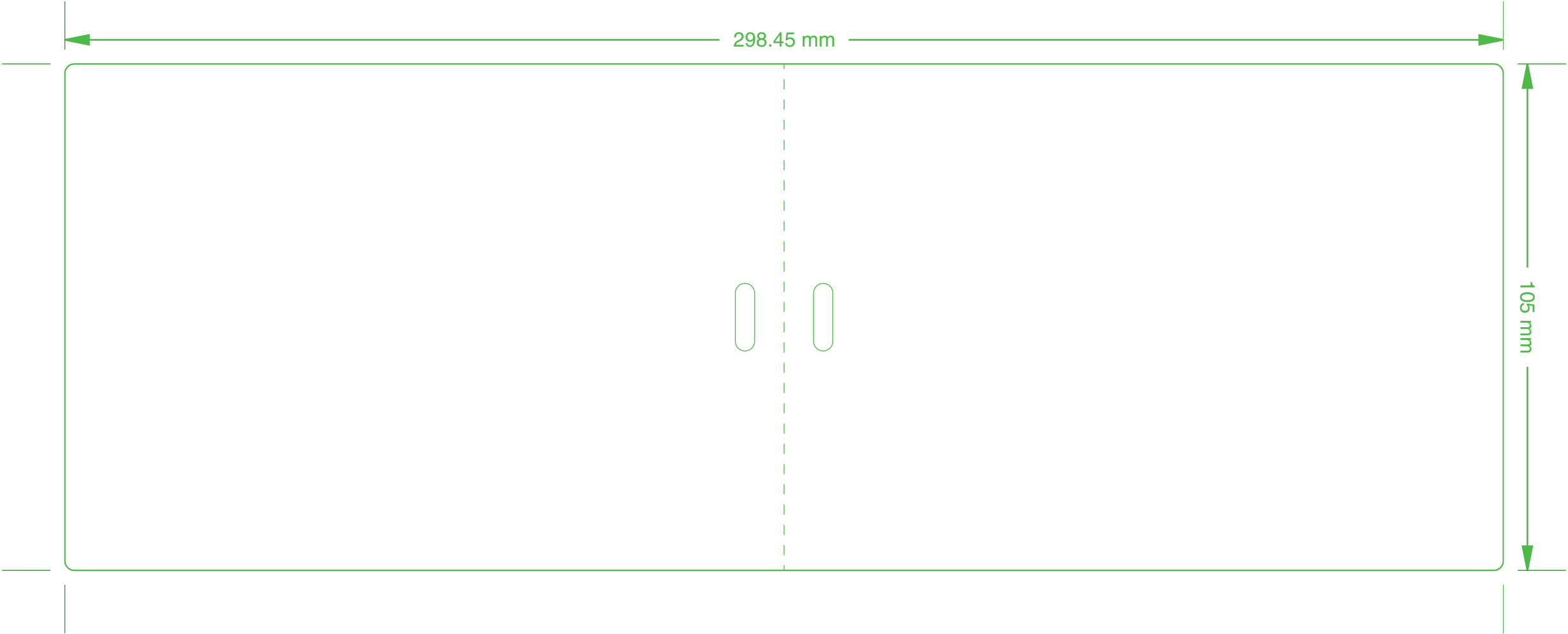
Badge D

101.6mm x 101.6mm (non-adhesive)



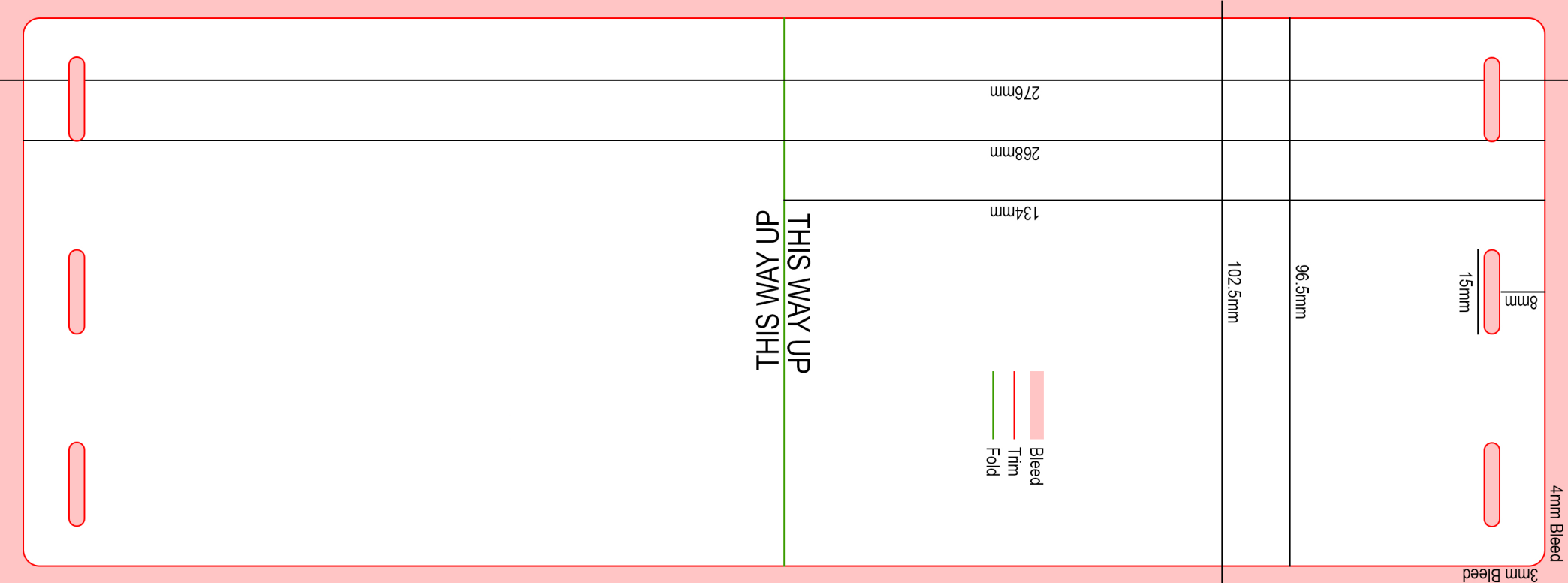
Badge E

105mm x 149.225mm (A6 non-adhesive)



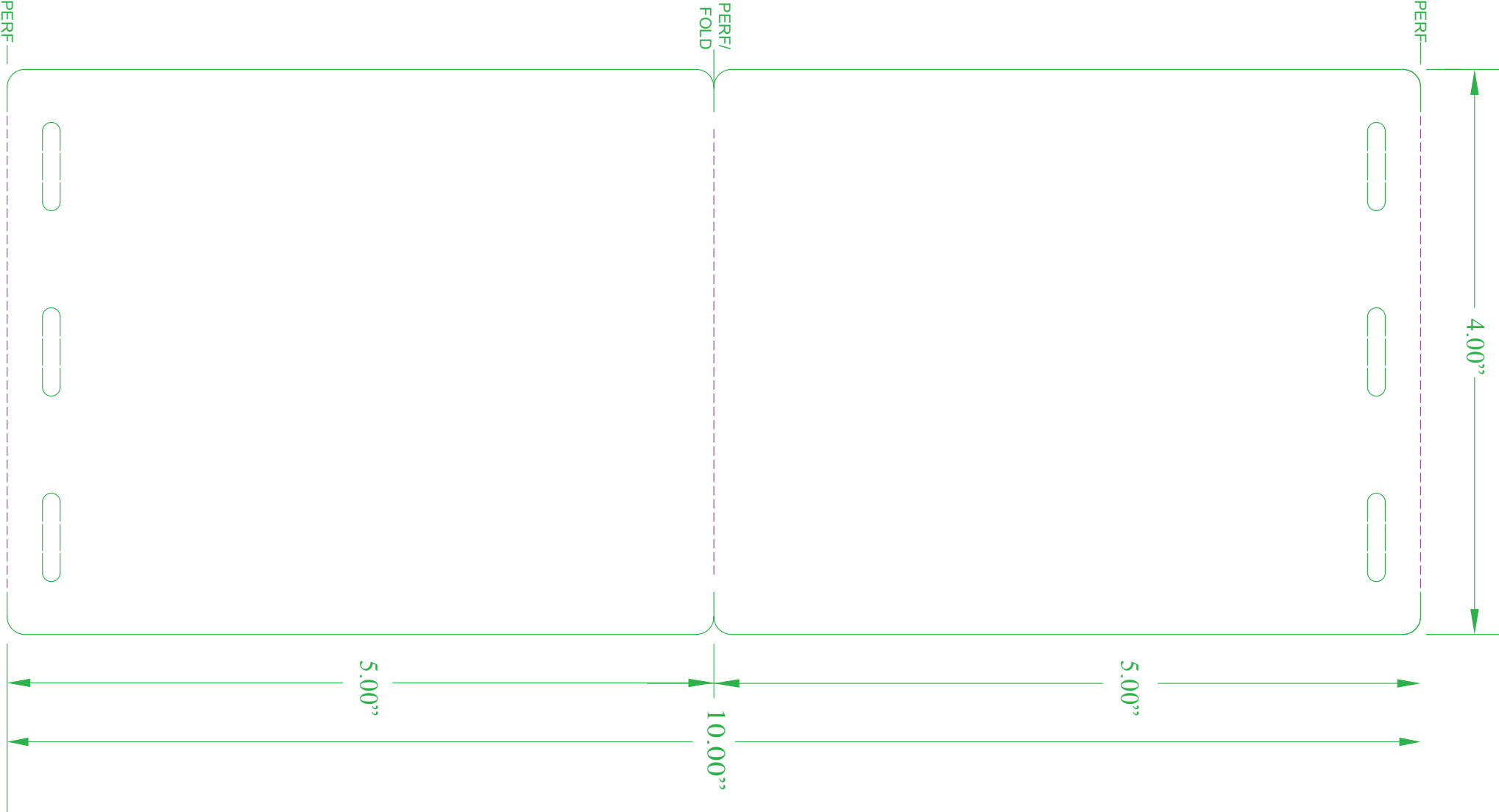
Badge F

96.5mm x 134mm (EPSON - UK)



Badge G

4inch x 5inch (EPSON - USA)



Badge H

4inch x 6inch (EPSON - USA)

